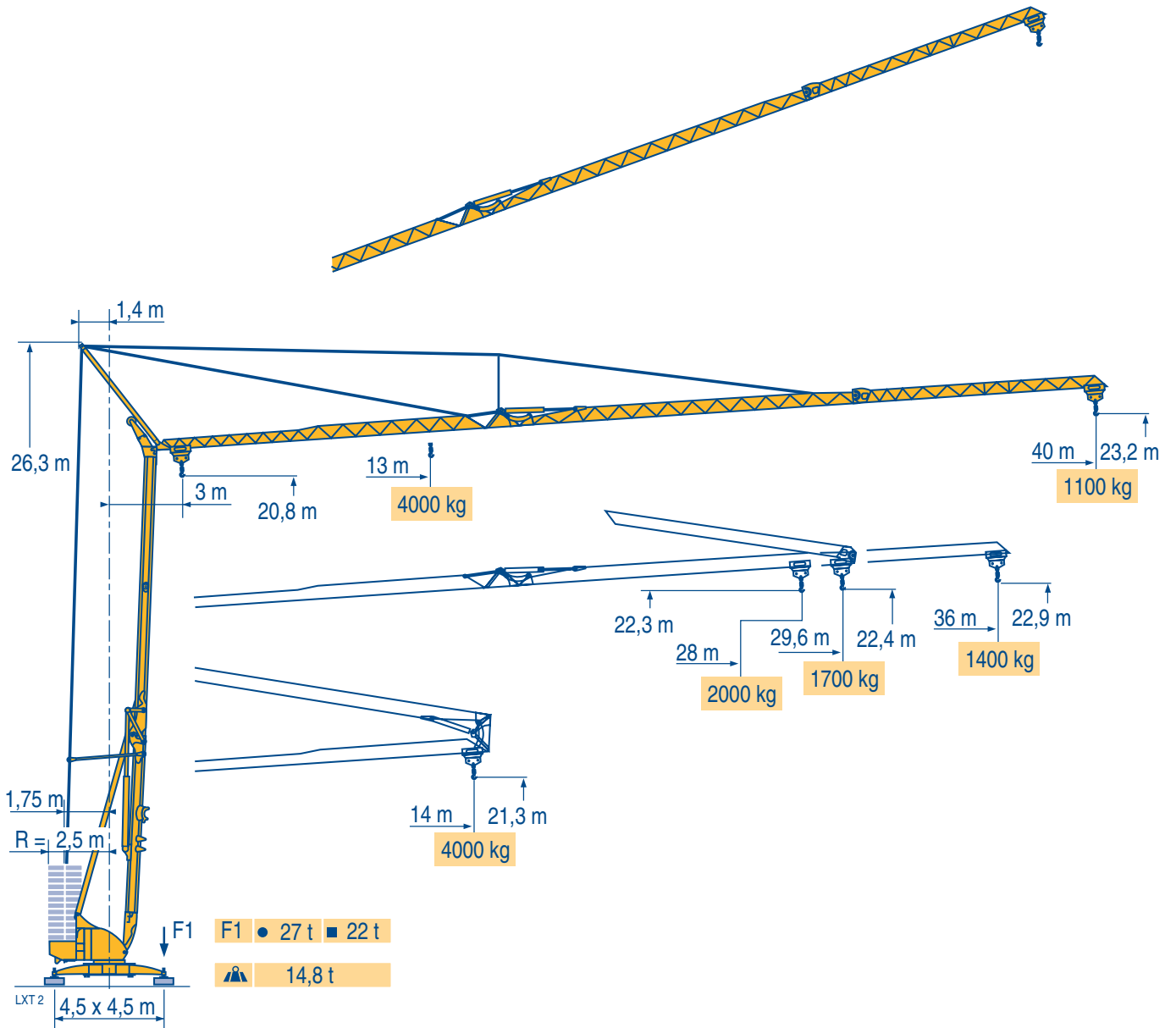


# POTAIN

## Igo 50



Courbes de charges

Lastkurven

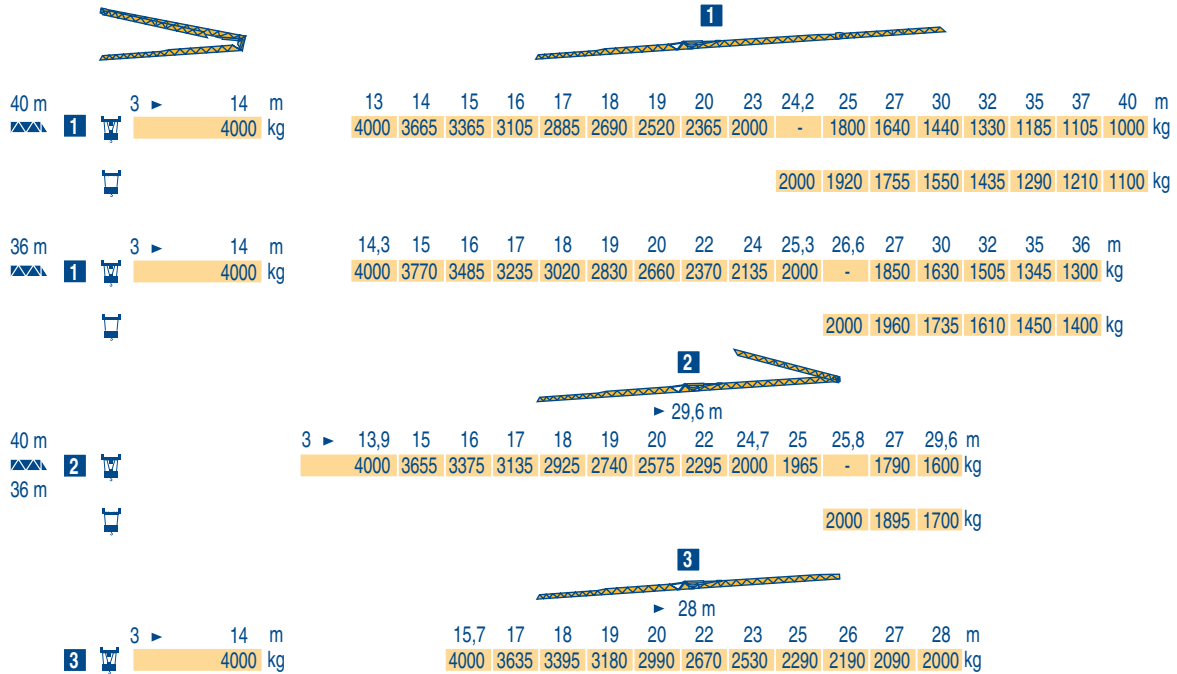
Load diagrams

Curvas de cargas

Curve di carico

Curva de cargas

LXT 2



Flèche relevée

Ausleger in Steilstellung

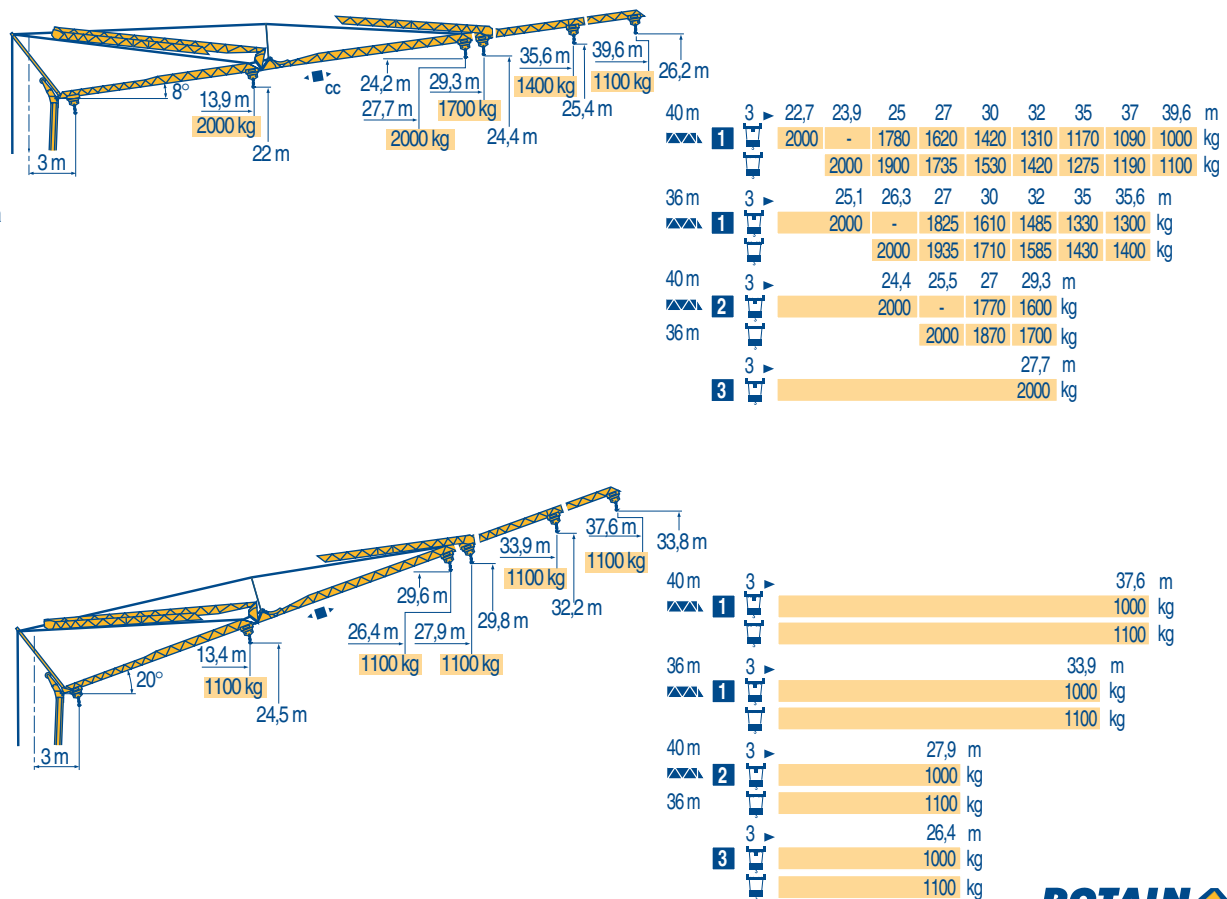
Luffing jib

Flecha izada

Braccio impennato

Lança inclinada

LXT 2



Igo 50



**F**  
Chariot distributeur  
Chariot distributeur et courbes de charges



**D**  
Verfahrbare Laufkatze  
Verfahrbare Laufkatze und Lastkurven



**GB**  
Traversing trolley  
Traversing trolley and load diagrams



**E**  
Carro distribuidor  
Carro distribuidor y curvas de cargas



**I**  
Carrellino distributore  
Carrellino distributore e curve di carico



**P**  
Carro distribuidor  
Carro distribuidor e curva de cargas

Reactions in service  
Reactions out of service  
A vide sans lest (ni train de transport) avec flèche et hauteur maximum.

Reaktionskräfte in Betrieb  
Reaktionskräfte außer Betrieb  
Ohne Last, Ballast (und Transportachse), mit Maximalausleger und Maximalhöhe.

Reactions in service  
Reactions out of service  
Without load, ballast (or transport axes), with maximum jib and maximum height.








Reacciones en servicio  
Reacciones fuera de servicio  
Sin carga, sin lastre, (ni tren de transporte), flecha y altura máxima.

Reazioni in servizio  
Reazioni fuori servizio  
A vuoto, senza zavorra (ne assali di trasporto) con braccio massimo e altezza massima.

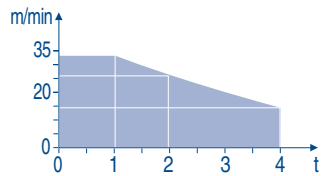
Reações em serviço  
Reações fora de serviço  
Sem carga (nem trem de transporte)- sem lastro com lança e altura máximas.

Mécanismes  
Antriebe  
Mechanisms  
Mecanismos  
Meccanismi  
Mecanismos

LXT 2

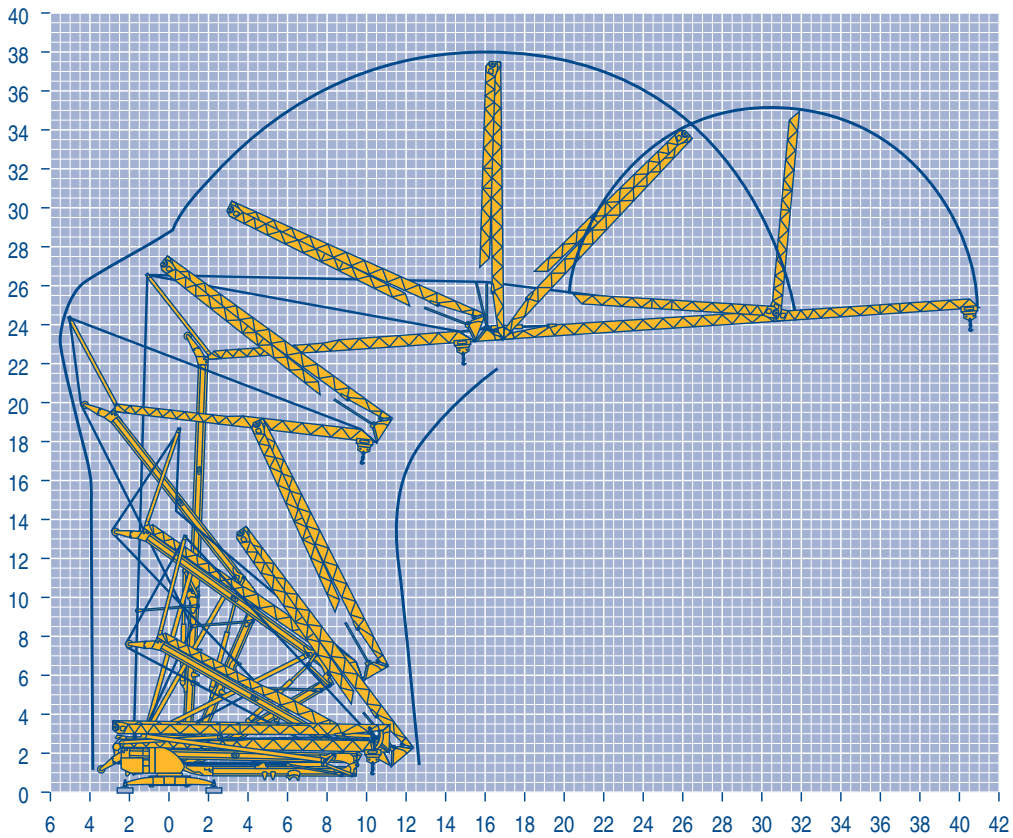
												ch - PS hp	kW	
	15 LVF 10 Optima	m/min	3,6	18	30	49	66						15	11
		kg	2000	2000	2000	1100	500							
		m/min	3,6	18	30	54	66	1,8	8,9	15	27	33		
		kg	2000	2000	2000	1000	500	4000	4000	4000	2000	1000		
	3 DVF5	m/min	19 - 45 (0 → 1000 kg) - 19 - 41 (1000 → 4000 kg)									3	2,2	
	RVF+ 51	tr/min U/min rpm	0 → 0,8									5,5	4	
CEI 38 		IEC 38		kVA										
400 V (+6% -10%) 50 Hz		15 LVF 10 : 23 kVA					2000/14							

15 LVF 10  
Optima



Montage  
Montage  
Erection  
Montaje  
Montaggio  
Montagem

LXT 1



Igo 50

**POTAIN** 

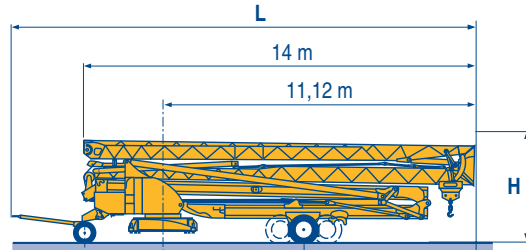


F	D	GB	E	I	P
Levage	Heben	Hoisting	Elevación	Sollevamento	Elevação
Distribution	Katzfahren	Trolleying	Distribución	Distribuzione	Distribuição
Orientation	Schwenken	Slewing	Orientación	Rotazione	Rotação
Conforme aux directives CEE sur le niveau acoustique	Gemäss EWG-Richtlinien für den Schall-Leistungspegel	In compliance with the EEC Instructions on noise level	Conforme con las directivas CEE sobre el nivel acustico	Conforme alle direttive CEE sul livello acustico	Conforme as directivas CEE sobre o nível acústico

Transport  
Transport  
Transport  
Transporte  
Trasporto  
Transporte

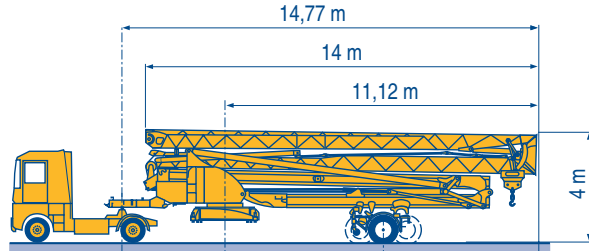
- DJ100/S120 ○
- DJ105/S125
- DJ126M/S125
- DJ126M/S215M

LXT 4



				H	L
DJ100/S120	2,75 m	5,25 m	5,87 m	3,57 m	16,39 m
DJ105/S125	2,75 m	5,25 m	5,87 m	3,57 m	16,39 m
DJ126M/S125	2,75 m	5,25 m	5,87 m	3,57 m	16,96 m
DJ126M/S215M	3,55 m	4,93 m	6,19 m	4 m	17,75 m

- SL122/J215M
- SL121/J135
- SL121/S215M



SL122/J215M	3,65 m	4,93 m	6,19 m
SL121/J135	3,65 m	5,88 m	5,24 m
SL121/S215M	3,65 m	4,93 m	6,19 m

- F**  
Chantier
- D**  
Baustelle
- GB**  
Site
- E**  
Obra
- I**  
Cantiere
- P**  
Estaleiro



Document commercial non contractuel. Pour toute information technique se référer à la notice correspondante

Unverbindliches Vertriebsdokument. Für technische Informationen, siehe die entsprechenden Anweisungen.

This commercial document is not legally binding. For any technical information, please refer to the corresponding instructions.

Documento commercial non contractuel. Para cualquier información técnica, ver la noticia correspondiente.

Documento commerciale non vincolante, per tutte le informazioni tecniche fare riferimento al catalogo istruzioni

Documento comercial não contratual. Para qualquer informação técnica complementar consultar as respectivas instruções



18, rue de Charbonnières - B.P.173  
69132 ECULLY Cedex - France

Tél. : (33) 4 72 18 20 20  
Fax. : (33) 4 72 18 20 00  
www.manitowoccrane.com www.potain.com



**Americas**  
Tel: +1 920 683 6322  
Tel: +1 717 597 8121

**Europe - Middle East - Africa**  
Tel : +(33) 4 72 81 50 00  
Tel : +(44) 191 565 6281

**Asia - Pacific**  
Tel: +(65) 6861 7133  
Fax: +(65) 6862 4142

www.manitowoccrane.com

**Igo 50**

Réf. 2003 48 LXT 4

Copyright.Reproduction interdite © POTAIN 2003

Réalisation HeadLines