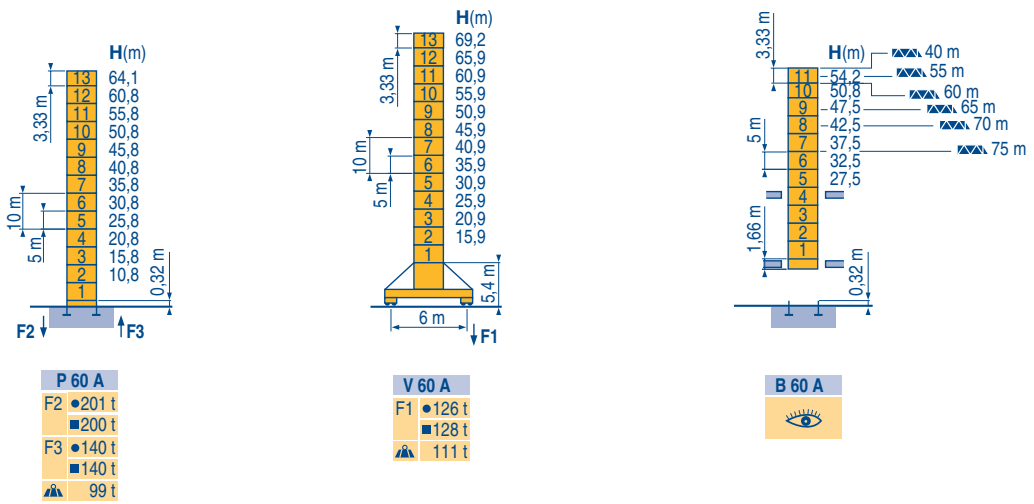




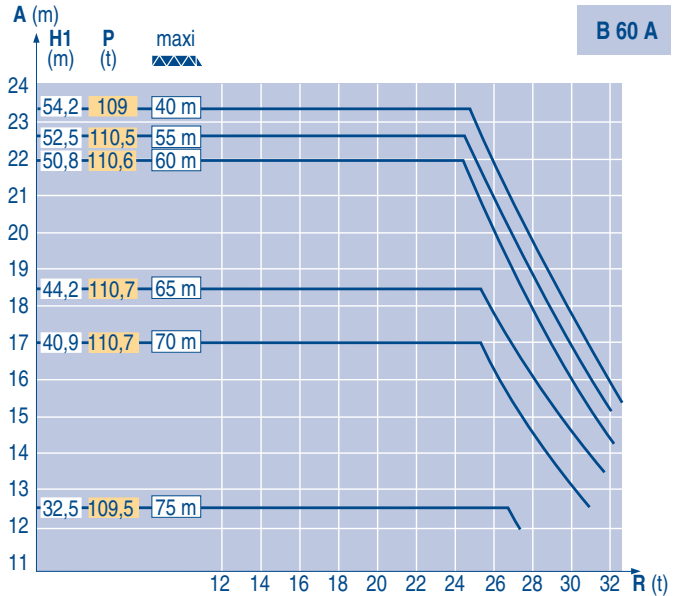
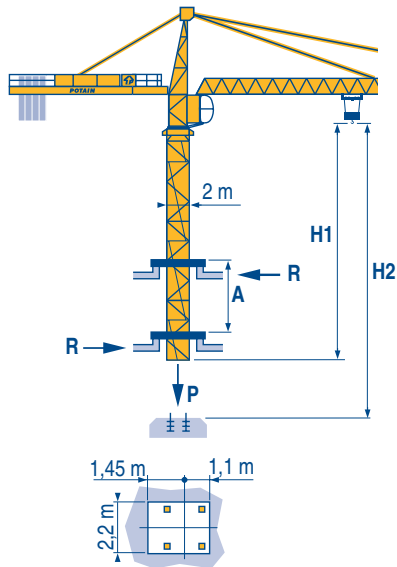
Mat / Réactions  $\square$  2 m  
 Maste / Eckdrücke  $\triangle$  40 m  $\Rightarrow$  75 m  
 Masts / Reactions  
 Mástil / Reacciones  
 Torre / Reazioni  
 Tramo / Reações

LYW 1



Télescopage sur dalles  
 Kletterkrane im Gebäude  
 Climbing crane  
 Telescopage gruas trepadoras  
 Gru in cavedio  
 Telescopagem sobre lajes

LYW 1



TOPKIT  
 MD 365 B L16

POTAIN

F

● Réactions en service  
 ■ Réactions hors service  
 A vide sans lest (ni train de transport) avec flèche et hauteur maximum.

D

● Reaktionskräfte in Betrieb  
 ■ Reaktionskräfte außer Betrieb  
 Ohne Last, Ballast (und Transportachse), mit Maximalausleger und Maximalhöhe.

GB

● Reactions in service  
 ■ Reactions out of service  
 Without load, ballast (or transport axles), with maximum jib and maximum height.

E

● Reacciones en servicio  
 ■ Reacciones fuera de servicio  
 Sin carga, sin lastre, (ni tren de transporte), flecha y altura máxima.

I

● Reazioni in servizio  
 ■ Reazioni fuori servizio  
 A vuoto, senza zavorra (ne assali di trasporto) con braccio massimo e altezza massima.

P

● Reações em serviço  
 ■ Reações fora de serviço  
 Sem carga (nem trem de transporte)- sem lastro com lança e altura máximas.

### Courbes de charges

Lastkurven

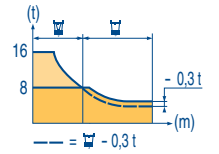
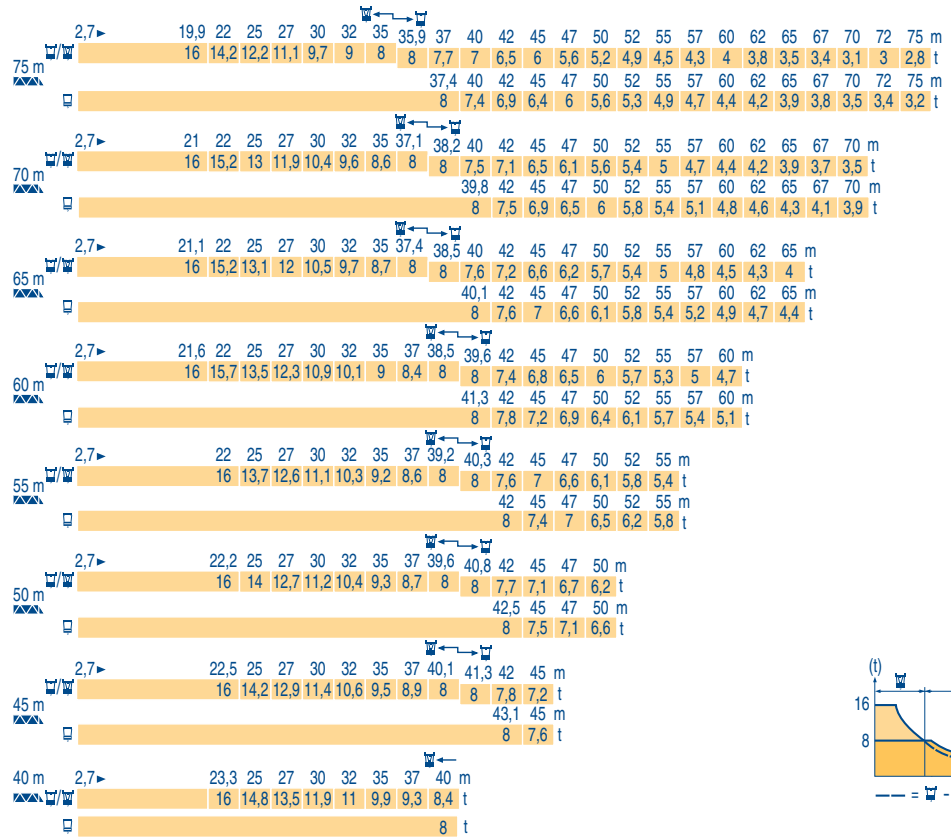
Load diagrams

Curvas de cargas

Curve di carico

Curva de cargas

LW 1



### Lest de contre-flèche

Gegenauslegerballast

Counter-jib ballast

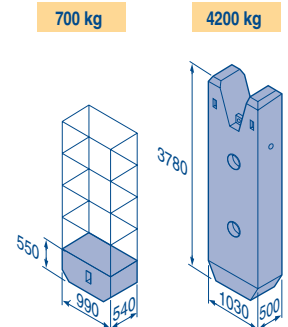
Lastre de contra flecha

Contrappeso

Lastros da contra lança

LW 2

Height (m)	Jib length (m)	75 LVF			100 LVF			150 LCC		
		4200 kg	700 kg	▲ (kg)	4200 kg	700 kg	▲ (kg)	4200 kg	700 kg	▲ (kg)
75 m	24,2 m	5	4	23 800	5	3	23 100	5	2	22 400
70 m	24,2 m	5	-	21 000	4	5	20 300	4	3	18 900
65 m	24,2 m	4	3	18 900	4	3	18 900	4	1	17 500
60 m	24,2 m	4	-	16 800	3	5	16 100	3	3	14 700
55 m	24,2 m	3	3	14 700	3	3	14 700	3	2	14 000
50 m (B60A)	24,2 m	3	2	14 000	3	1	13 700	3	-	12 600
50 m	18,2 m	5	5	24 500	5	4	23 800	5	3	23 100
45 m	18,2 m	5	-	21 000	4	5	20 300	4	4	19 600
40 m	18,2 m	4	2	18 200	4	1	17 500	4	-	16 800



### Lest de base - Grundballast

Base ballast - Lastre de base

Zavorra di base - Lastros da base

LW 1

Height (m)	V 60 A	H (m)											
		69,2	65,9	60,9	55,9	50,9	45,9	40,9	35,9	30,9	25,9	20,9	15,9
2 m		108	108	108	108	108	108	96	96	96	84	84	84

### Ancrages

Verankerungen

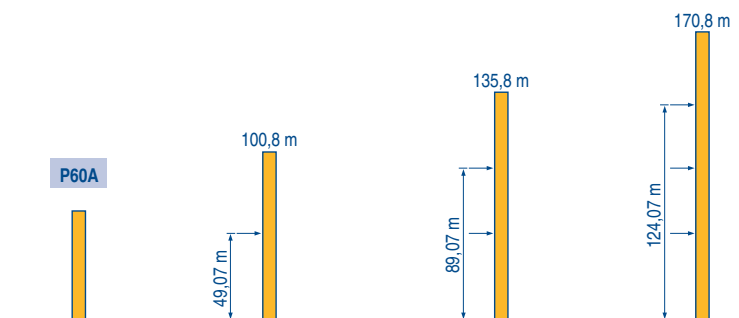
Anchorage

Anclaje

Ancoraggio

Ancoragem

LW 1



### TOPKIT






MD 365 B L16

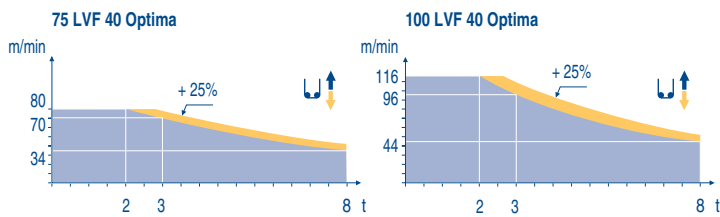
















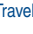




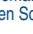
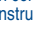









	F	D	GB	E	I	P
<b>A</b>	Distance entre cadres	Abstand zwischen den Rahmen	Distance between collars	Distancia entra marcos	Distanza fra i telai	Distância entre quadros
<b>H1</b>	Hauteur grue	Kranhöhe	Crane height	Altura grúa	Altezza gru	Altura da grua
<b>P</b>	Poids de la grue(en service)	Krangewicht (in Betrieb)	Crane weight (in service)	Peso de la grúa (en servicio)	Peso della gru (in servizio)	Peso da grua (em serviço)
<b>R</b>	Réaction horizontale	Horizontalkräfte	Horizontal reaction	Reaccion horizontal	Reazione orizzontale	Reacção horizontal
	Voit télescopage sur dalles	Siehe Kletterkrane im Gebäude	See climbing crane	Veja grua trepadora	Consultare gru in cavedio	Ver telescopagem sobre lages


Mécanismes  
Antriebe  
Mechanisms  
Mecanismos  
Meccanismi  
Mecanismos

LYW 3

		U ↑					UU ↑					ch - PS hp	kW										
▲	75 LVF40 Optima	m/min	0	→	34	→	44	→	70	→	80	0	→	17	→	22	→	35	→	40	75	55	553 m
		t	8		6		3		2			16		12		6		4					
	100 LVF40 Optima	m/min	0	→	44	→	56	→	96	→	116	0	→	22	→	28	→	48	→	58	100	75	1009 m
		t	8		6		3		2			16		12		6		4					
	150 LCC 40	m/min	68	→	82	→	102	→	136	→	162	34	→	41	→	51	→	68	→	81	150	110	596 m
		t	8		6		4		2		1	16		12		8		4		2			
◀ ▶	6 DVF 6	m/min	0 → 42 (16 t) 0 → 84 (8 t) 0 → 100 (4 t)									5,5	4										
	RVF 182 OPTIMA	tr/min U/min rpm	0 → 0,7									2 x 12	2 x 9										
V 60 A 	RT 544 A1 2V R ≥ 13 m	m/min	13,5 - 27									4 x 7	4 x 5,2										
CEI 38 		IEC 38	kVA																				
400 V (+6% -10%) 50 Hz			75 LVF : 100 kVA 100 LVF : 125 kVA 150 LCC : 175 kVA					2000/14															



F	D	GB	E	I	P
					
Levage	Heben	Hoisting	Elevación	Sollevarmento	Elevação
					
Distribution	Katzfahren	Trolleying	Distribución	Ditribuzione	Distribuição
					
Orientation	Schwenken	Slewing	Orientación	Rotazione	Rotação
					
Translation	Kranfahren	Travelling	Traslación	Traslazione	Translação
					
Conforme aux directives CEE sur le niveau acoustique	Gemäss EWG-Richtlinien für den Schall-Leistungspegel	In compliance with the EEC Instructions on noise level	Conforme con las directivas CEE sobre el nivel acústico	Conforme alle direttive CEE sul livello acustico	Conforme as directivas CEE sobre o nível acústico

 Document commercial non contractuel. Pour toute information technique se référer à la notice correspondante

Unverbindliches Vertriebsdokument. Für technische Informationen, siehe die entsprechenden Anweisungen.

This commercial document is not legally binding. For any technical information, please refer to the corresponding instructions.

Documento comercial no contractual. Para cualquier información técnica, ver la noticia correspondiente.

Documento commerciale non vincolante, per tutte le informazioni tecniche fare riferimento al catalogo istruzioni

Documento comercial não contractual. Para qualquer informação técnica complementar consultar as respectivas instruções



18, rue de Charbonnières - B.P.173  
69132 ECULLY Cedex - France

Tél. : (33) 4 72 18 20 20  
Fax. : (33) 4 72 18 20 00  
www.manitowoccrane.com www.potain.com



**Americas**  
Tel: +1 920 683 6322  
Tel: +1 717 597 8121

**Europe - Middle East - Africa**  
Tel : +(33) 4 72 81 50 00  
Tel : +(44) 191 565 6281

**Asia - Pacific**  
Tel: +(65) 6861 7133  
Fax: +(65) 6862 4142

www.manitowoccrane.com

**TOPKIT MD 365 B L16**  
Réf. 2003 48 LYW 3

Copyright.Reproduction interdite © POTAIN 2003

Réalisation Sedoc